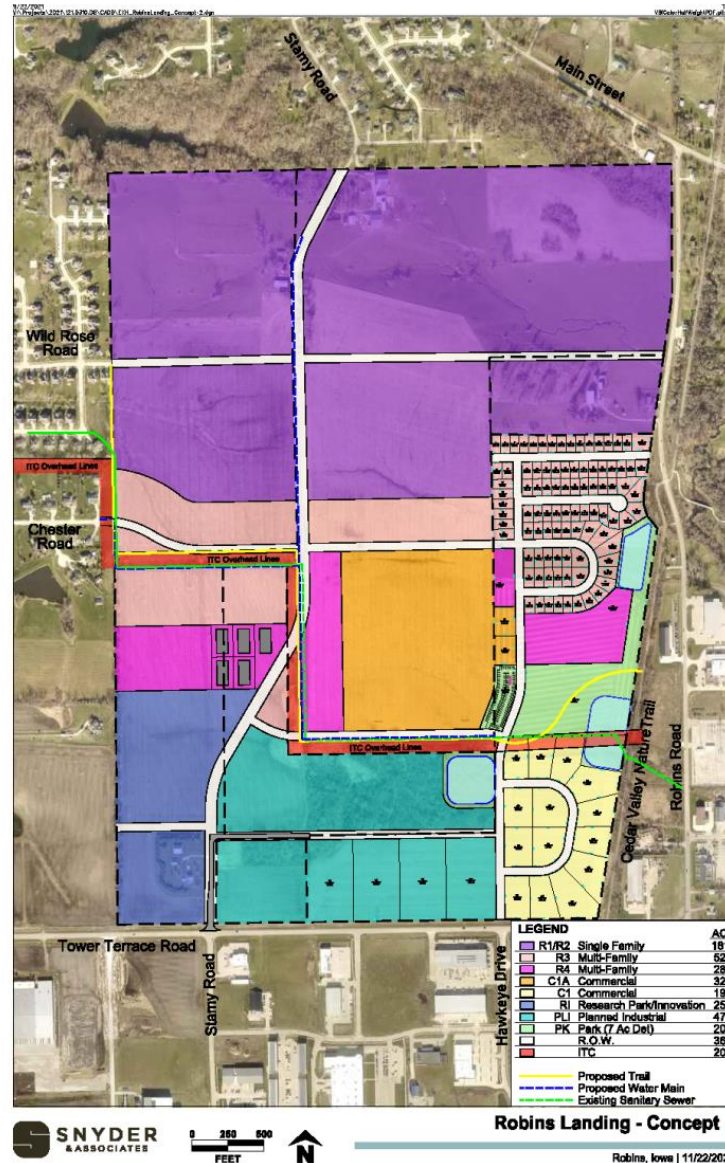


Robins Landing

Description: The area described as Robins Landing consists of approximately 430 acres of land. Full development of the land will be done over many years, through multiple additions, and multiple private developers, as land comes available for public purchase. In response to the 2019 Community Survey ([Looking to the Future](#)) this development will feature:

- City Parkland
- Combination of residential, commercial, planned light industrial and research use
- Regional storm water detention
- Connection to Cedar Valley Nature Trail via the existing South Troy Park trail and the future ITC trail to the west

Robins Landing Concept



Robins Landing First Addition

Mixed-use development located northwest of the intersection of Robins Rd and Tower Terrace Rd. The Developer will construct a 13-acre City park with trailhead parking and a connection to the CVNT as well as stormwater detention areas. The first addition will be constructed in multiple phases. Concrete streets with City water and sewer.

Developer/Owner:	Robins Landing First Addition, LLC, c/o Jon Dusek
Area:	96 Acres
Development Type:	Single and Multi-Family Residential, Commercial and Light Industrial
Location:	Tower Terrace Road and Robins Road
Number of Lots:	Build to Suit
Size of Lots:	Build to Suit
Final Plat Approval:	1 st Phase Anticipated Fall of 2023

